



## FREE WIRELESS COMPUTING AT THE LIBRARY

You are invited to use the Scarborough Public Library's Internet network with your own wireless-enabled laptop computer. Free access is available whenever the library is open. Simply acquire our network signal and launch your web browser. Your computer's home page will appear and you may begin surfing immediately.

The wireless network is easiest to access if your computer has MS Windows XP or Windows 2003 installed, but will accommodate other operating systems as well. There is one access point and reception seems to be best in the adult reference area.

Visit <http://www.library.scarborough.me.us> to see the other resources of the Scarborough Public Library, including its catalogs, services, and full-text databases.

### Hardware Requirements

You will need a WiFi-compliant 802.11b or 802.11g wireless Ethernet device installed in your laptop or a laptop with built-in WiFi capability. **The Library staff cannot install this equipment for you.**

### Software Requirements

1. A web browser, such as Microsoft Internet Explorer, Mozilla, or Opera.
2. Set your TCP client software to obtain addresses automatically from a server.
3. Install and configure TCP/IP software by opening the Network icon in the Control Panel.
4. Under Protocol settings, add TCP/IP if it is not present already. Set the IP address to obtain an IP address automatically. Leave all other fields blank.
5. Restart the laptop for the changes to take effect.

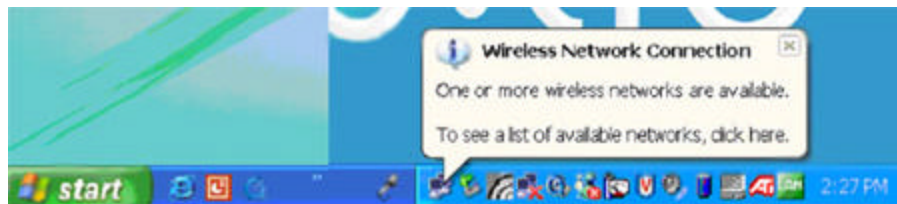
## Internet Explorer Tips

(Depending on your version of software, there may be variations in these procedures.)

1. From **Control Panel**, select **Internet Options > Connections** tab>
2. For those with a **dial-up connection**, do **not** set it to **Always dial my default connection**
3. **LAN Settings** should be **Automatically detect settings** and leave the Proxy server settings **blank**

## Finding Library Hot Spots

To find the Library's hot spots, click on your wireless icon in the taskbar:



If no icon is present:

1. Click **Start, Settings**, then **Network Connections**
2. Right click **Wireless Network Connection** and then click **View Available Wireless Networks** (a list of wireless access points appears in the **Available Networks** box)
3. Click the wireless connection called **LIBRARY**
4. Click **Connect**

## Operating Systems Tips

### Windows OS

1. Right click **My Network Places/Network Neighborhood**  
Go to **Properties**
2. Double-click **Wireless Adapter** (or simply click on your vendor icon for the wireless adapter in the lower right hand tool bar)
3. SSID (network name) = **LIBRARY** and a DHCP address will be allocated automatically
4. WEP = disable WEP encryption
5. Mode or Network Type = Infrastructure mode or access point
6. Restart (**reboot**) the computer (this is not a requirement with Windows XP)
7. Open a Web browser

## MAC OS X

1. Click on **System Preferences** from the Apple Menu
2. Double click the **Network** logo
3. Under **Show Menu** select **AirPort**
4. Close window
5. Open **Internet Connect** and turn on **AirPort**
6. From **Network Menu** select **LIBRARY**
7. Open a Web browser

## Troubleshooting Network Settings if you are having an IP conflict

### Troubleshooting Windows 95 & Windows 98

1. Go to **Start, Run** and type: **winipcfg**. Click OK. The IP configuration window will appear.
2. Click on the More Info button.
3. If you are having an IP conflict, click on the **Release All button** to release the current IP and then click on the **Renew All button**.

### Troubleshooting Windows NT, XP, and Windows 2000 Systems

Go to **Start, Run** and type: **CMD** and click OK. A command prompt window will appear.

Type the following in the command prompt window:

**ipconfig/all**: Displays the full configuration information

**ipconfig/release**: Releases the IP address

**ipconfig/renew**: Renews the IP address

## General Troubleshooting Network Settings

### Windows 98

1. From **Control Panel**, select **Network**
2. Locate the **TCP/IP protocol** and select **Properties** (if more than one TCP/IP protocol is listed, look for the one associated with your wireless adapter)
3. For **IP Address**, select **Obtain an IP address automatically**
4. For **DNS**, select **Disable DNS**

5. For **WINS**, select **Use DHCP for WINS Resolution**

### **Windows 2000 & XP**

(You may need administrative access to your laptop to change these settings)

1. From **Control Panel**, select **Network and Dial-up Connections** or **Network and Internet Connections > Internet Connections**
2. Right click **Wireless Network Connection** or **Local Area Connection**; click **Properties**
3. Locate the **TCP/IP protocol** and get into its **Properties** (if more than one TCP/IP protocol is listed, look for the one associated with your wireless adapter)
4. Select **Obtain an IP address automatically** and **Obtain DNS server address automatically**
5. For XP, right click **Wireless Network Connection** and select **View Available Wireless Networks**
6. Select the name of a wireless network **Library** and click **Connect**

### **Windows NT**

(You may need administrative access to your laptop to change these settings)

1. From **Control Panel**, select **Network**
2. Locate the **TCP/IP protocol** and get into its **Properties** (if more than one TCP/IP protocol is listed, look for the one associated with your wireless adapter)
3. Select **Obtain an IP address from a DHCP server** and click **OK**

### **Apple Macintosh Powerbooks or iBooks Network Settings (OS 8 & 9):**

1. Select **Apple Menu > Control Panel > TCP/IP**
2. Connect via **AirPort** or other wireless (WiFi) Ethernet card
3. Configure **Using DHCP Server**
4. Leave Name Server and Additional Search domains **blank**
5. Network Settings (OS X):
6. Select **Apple Menu > System Preferences > Network** button
7. Select **TCP/IP** tab and configure **Using DHCP** (above the TCP/IP tab, you may need to configure via **AirPort** or other wireless (WiFi) Ethernet card.
8. Leave Domain Name Servers and Search Domains **blank**

### **Limitations and Disclaimers**

1. Printing is not available via the wireless connection.
2. The Library's wireless network is filtered in compliance with the recent Supreme Court decision to uphold the Children's Internet

Protection Act (CIPA). At this time you will be prevented from connecting to those resources deemed to be Adult Content in nature.

3. We also block certain activities that would consume excessive network bandwidth or encourage hacking into our network.
4. The Library's wireless network is not guaranteed to be secure. Information sent from or to a laptop or PDA could be captured freely without your knowledge by anyone with a wireless device and the appropriate software, and the understanding of wireless protocols within a few hundred feet.
5. The Library assumes no responsibility for laptop configurations, security or changes to data files resulting from connection to the Library's network.
6. The Library assumes no responsibility for the safety of equipment; users must keep their equipment with them at all times.
7. It is the user's responsibility to install all necessary hardware and software for wireless connectivity via IEEE Standard 802.11b and 802.11g. Additionally, the Library recommends the installation of current virus protection and/or personal firewall software before using your laptop on our network.
8. Library staff is not able to provide technical assistance.
9. The Library cannot guarantee that all users will be able to connect to the network.
10. Users with laptops and PDAs will use electrical outlets at public tables only.